



# General Catalogue

Hydraulics & Lubrication

# About the Company



Since 2008, DL Fluid Power Company has been a trusted manufacturer and distributor of hydraulic components, serving the construction, mining, agriculture, and manufacturing industries. We specialize in hydraulic fittings, pipe clamps, hoses, valves, pumps, and power pack accessories, delivering durable, efficient, and application-focused solutions. Our operations are supported by a certified **ISO 9001:2015** Quality Management System, reflecting our commitment to consistent quality and continual improvement.

## Why Choose DL Fluid Power?

At DL Fluid Power, we are committed to delivering high-quality, innovative, and reliable hydraulic solutions tailored to industry needs.

### 1. Uncompromising Quality

Our products conform to global standards and are supplied through well-defined and controlled processes, ensuring consistency, durability, and reliable performance. Each component is subjected to stringent inspection and verification procedures to ensure dependable operation in real-world applications.

### 2. Customer-First Approach

We build long-term partnerships by offering customized solutions, technical expertise, and responsive support to address evolving industry challenges. Our operations follow the requirements of an **ISO 9001:2015** Quality Management System, ensuring structured processes, consistent service delivery, and continual improvement driven by performance monitoring and customer feedback.

### 3. End-to-End Support

From product selection to after-sales service, our experienced team provides consultation and guidance to ensure seamless integration into customer operations.

### 4. Innovative Solutions

By adopting the latest advancements in hydraulic technology and engineering practices, we continuously enhance efficiency, safety, and system performance, delivering solutions aligned with modern industry requirements.

With DL Fluid Power, you don't just get a supplier—you gain a dedicated partner focused on driving your operational success.

# Hydraulic Fittings

Hydraulic tube fittings ensure secure, leak-proof connections in high-pressure hydraulic systems. At DL Fluid, we manufacture precision-engineered fittings that meet **DIN 2353** standards for durability and performance. CNC-machined for accuracy, our fittings include the body, nut, and ferrule. We offer BSP, NPT, and Metric threading options, customizable to meet specific system requirements.

### Available Pressure Series:

- **LL Series** – Low-pressure applications
- **L Series** – Light-pressure applications
- **H Series** – Heavy-pressure applications

### Types of Fittings & Additional Components:

- Tube-to-Tube Connections – Straight couplings
- Male Thread to Tube Connections – Male stud couplings
- Female Thread to Tube Connections – Female couplings
- Tube-to-Tube Bend Connections – Equal/unequal elbow couplings
- Tube-to-Tube “T” Connections – Equal/unequal tee couplings
- Tube-to-Tube Cross Connections – Equal/unequal cross couplings
- Bulkhead Couplings – Standard and elbow designs
- Weld Bulkhead Couplings



- Banjo Couplings
- Swivel Connectors
- Weld Nipples
- Blanking Plugs
- Gauge Adapters
- Socket Plugs
- Hex Plugs
- Adaptors

# Pipe clamps

We manufacture a wide range of precision-engineered pipe clamps designed for securing pipes, tubes, and hoses across various industrial applications. The designs are in accordance with **DIN-3015**. These clamps ensure structural stability and noise reduction, making them ideal for marine, oil and mining, and automotive industries.

Our pipe clamps are manufactured using high-quality materials for durability and performance:

- Jaws: Polypropylene (PP), Polyamide (Nylon), and Aluminum
- Top & Bottom Plates: Mild Steel (MS), Stainless Steel (SS 304/316)
- Bolts: Mild Steel (MS), Stainless Steel (SS 304/316)



### Types of pipe clamps available:

- Standard clamps
- Heavy duty clamps
- Twin clamps
- Aluminium clamps
- Rail nut clamps

# Hydraulic Hose Fittings

Hydraulic hose fittings connect hydraulic hoses to systems, enabling the smooth flow of fluid under high pressure. At DL Fluid, we manufacture premium-quality hose fittings designed for both high and low-pressure hydraulic applications. Precision-engineered for a leak-proof assembly, our fittings ensure durability and reliable performance.

We offer a wide range of threading options to meet customer needs and design specifications, including:

- BSP
- NPT
- Metric
- UNF
- Flange fittings

Hose Fitting Components:

- Hose Straight Nipple
- Hose Bend
- Hose Cap
- Hose Nut



# Hydraulic Hose

We offer a diverse range of premium hydraulic hoses engineered for industrial applications. From low-pressure to high-pressure and specialized uses.

Our hoses serve industries such as construction, agriculture, and manufacturing with reliability and precision.

- Hydraulic hoses comply with **SAE** and **DIN standards**.
- Our hoses range from **R1, R2, R3, R6, R9 to R13** grades, tailored to meet varying pressure and temperature requirements.
- A wide selection of threading sizes is available, including **BSP, Metric, UNF, ORFS and more**.

## Types of Hydraulic Hoses:

**Braided Hoses** – Made with steel wire braiding, offering flexibility and strength.

**Spiral Hoses** – Built with multiple layers of steel wire, designed for higher pressure applications.

**Thermoplastic Hoses** – Lightweight and resistant to chemicals, ideal for mobile applications.

Brands we offer: **Parker, Polyhose, Superhose, Gaintflex**



# Seamless Tube

Our seamless tubes are ideal for hydraulic tubing, heat exchangers, and general engineering applications. Manufactured as per **DIN 2391 Part 2**, they are available in multiple grades and finishes, including bright/black annealed, passivated, phosphate, and zinc-plated options. With precise dimensional tolerances, they ensure optimal performance and longevity.

## Specifications:

- Sizes: 4mm OD to 70mm OD
- Wall Thickness: 0.5mm to 70mm
- Oiled/varnished for rust prevention
- Uniformly annealed for proper ferrule biting

## Key Features:

- Seamless Construction
- High Pressure Resistance
- Smooth Internal Surface
- Oiled Finish
- Corrosion Resistant
- Precision Dimensions

**Authorized Distributor: Aqua Metal and Tubes**



# Hydraulic Cylinders

Hydraulic cylinders are essential for converting hydraulic energy into mechanical motion, enabling lifting, pushing, and positioning in industrial and heavy machinery applications. DL Fluid supplies durable, high-performance cylinders designed for efficiency in demanding environments.

## Types We Offer:

- **Double-Acting & Single-Acting** – Provides motion in both or one direction.
- **Telescopic** – Multiple nested stages for extended stroke.
- **Welded & Tie Rod Construction** – Compact and high-strength or easily serviceable designs.

## Mounting style:

- **Flange mount** – Attached to a machine frame.
- **Foot Mount** – Secured on a base or structure
- **Clevis Mount** - Allows pivoting motion.
- **Trunnion Mount** - Used in requiring angular movement.



# Hydraulic Valves

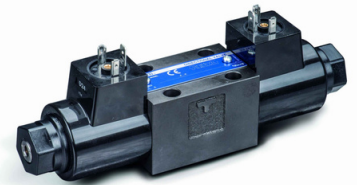
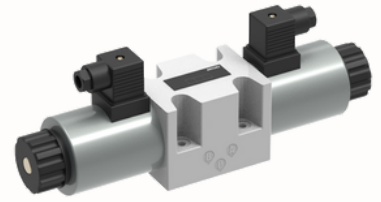
We offer a comprehensive range of hydraulic valves to control pressure, flow, and direction with precision.

## Types:

1. **Pressure Control Valves:** Relief, Reducing, Sequence, Counterbalance
2. **Directional Control Valves:** Lever, Solenoid, Pilot Operated, Mobile Control.

We supply a wide range of directional control valves, including solenoid-operated and hand-operated models. Our valves conform to CETOP3 and CETOP5 standards and are available in multiple configurations to suit diverse system requirements:

- |              |                |
|--------------|----------------|
| 2-Way Valves | 4/3 Way Valves |
| 3-Way Valves | 4/5 Way Valves |



# Hydraulic Oil Pumps

A hydraulic oil pump is a mechanical device that converts mechanical power into hydraulic energy by pressurizing hydraulic oil. As the heart of any hydraulic system, it generates the necessary flow and pressure to drive actuators such as cylinders and motors, ensuring efficient and reliable system operation.

Types of Hydraulic Oil Pumps we offer:

- **Gear Pumps** – Feature internal gears for smooth operation, commonly used in industrial machinery, power steering systems, and agricultural equipment. Types of Gear pumps we deal in are: **0P, 1P, 2P, 3P and Tandem Pumps.**
- **Vane Pumps** – Utilize sliding vanes in a rotor to move hydraulic fluid, ideal for automotive applications, plastic moulding machines, and low to medium-pressure hydraulic systems.
- **Axial Piston Pumps** – Contain pistons that move parallel to the pump shaft, making them suitable for heavy machinery, aerospace, and industrial hydraulic applications.
- **Radial Piston Pumps** – Have pistons that move outward from a central shaft, designed for high-pressure systems in heavy machinery, aerospace, and industrial hydraulics.

**Brands Offered:** Dowty, Yuken, Rexroth, Tucson Hydrocontrol, Jacktech Hydraulics, Polyhydron.



# Filtration Products

Hydraulic filtration products are essential for maintaining system reliability by removing contaminants such as dirt, water, and air from hydraulic fluid, thereby extending component life and preventing system failures. We deal in a comprehensive range of filtration solutions, including **Hydroline filters**, which feature high-efficiency media such as glass fiber and robust designs (spin-on, inline, and tank-mounted) for extended oil life, effective component protection, and clogging indicators for preventive maintenance.



Types of Hydraulic Filters we deal in:

- Suction Strainers
- Tank Immersed Filters
- Inline Filters
- Inline Spin-On Filters
- Diffusers
- Breathers
- Level Gauges
- Magnetic Tank Cleaners
- Inline Check Valves

Key Applications:

- Mobile Equipment: Construction, agriculture, transport and hydraulic powerpacks.
- Industrial Machinery: Manufacturing, energy, processing plants.

We deal in **Hydroline** and **HYDAC** filtration products.



# Bell Housing & Gear Coupling

We provide precision-engineered bell housings designed for reliable coupling of electric motors with gear and piston pumps. Manufactured to ensure accurate alignment, these bell housings minimize vibration, reduce wear on rotating components, and support smooth, efficient operation under continuous duty conditions. Their robust construction ensures long service life in demanding hydraulic applications.

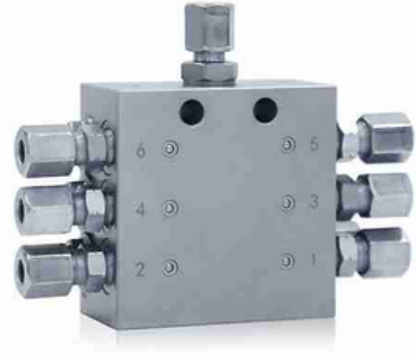
Specifications:

- Material: High-grade aluminium pressure die casting
- Power range: 0.5 HP to 50 HP
- Supply scope: Available with compatible couplings and complete bolt kits for easy installation



## Progressive Blocks

Designed for sequential lubricant distribution, these blocks feature custom pressure adjustments and integrated sensing capabilities for precise monitoring. Available with 2 to 20 outlets or custom-built as per specific requirements. Engineered for reliable performance, they ensure accurate lubricant delivery to multiple points while minimizing pressure loss. Suitable for centralized lubrication systems across a wide range of industrial applications.



## Metering Cartridges

Metering cartridges are precision-engineered for automatic lubrication systems, ensuring consistent and accurate oil distribution. Each functions as a mini-cylinder with an integrated check valve, dispensing a precise oil volume per pump cycle. The self-recharging mechanism allows uninterrupted lubrication by refilling automatically when pressure is released.

Key Features:

- Accurate Lubrication – Delivers precise oil quantities.
- Self-Recharging – Ensures continuous operation.
- Check Valve Integration – Prevents backflow for efficiency.
- Durable & Reliable – Designed for demanding applications.



## Quick Release Couplings

Designed for fast connection and disconnection, quick-release couplings minimize downtime in fluid and pneumatic systems. Available in carbon steel, stainless steel, and brass, they come in various types, including one-way, two-way check valves, straight-through, flat-face couplings and tube couplings.

As a distributor of **Holmbury UK**, we offer high-quality couplings that ensure reliable performance in demanding applications.



# High-Pressure Manual Valves

## Ball Valves

High-pressure 2-way and 3-way hydraulic ball valves are designed to regulate or completely shut off the flow of liquids or gases. These valves function by rotating a precision-engineered ball 90 degrees to open or block the passage, ensuring efficient and reliable control.

Made from robust carbon steel, they offer excellent resistance to wear, corrosion, and contaminated media, while maintaining a tight seal even after prolonged inactivity.

We supply ball valves rated up to 500 bar (7,250 psi), suitable for demanding hydraulic applications.

Available in sizes ranging from ¼" to 2", these valves are ideal for a wide range of industrial hydraulic and pneumatic systems.



## Needle valve

Hydraulic needle valves are designed for precise flow control and isolation in high-pressure systems. Their fine-threaded stem allows gradual adjustment, making them ideal for applications requiring accurate flow regulation.

We offer valves from ¼" to 3", with NPT, BSP, SW, and BW end connections in male or female types. Constructed in a square body design, they are easy to install and handle.

Material options include SS 304, SS 316, SS 316L, carbon steel, and brass, with PTFE seats for chemical resistance. They handle pressures from 210 to 1000 bar (3,045 to 14,500 psi) and temperatures between -20°C to +250°C.



## Flow Control Valves

A hydraulic flow control valve regulates the flow rate of hydraulic fluid within a system, enabling accurate control of actuator speed in cylinders and motors while ensuring stable and repeatable operation. By controlling the effective flow area, these valves minimize pressure surges and prevent erratic movement in hydraulic circuits.

DL Fluid Power Company is an authorized dealer of **Tucson Hydrocontrols**, supplying a wide range of hydraulic flow control valves, including throttle check valves, bypass type flow control valves, proportional flow control valves, and fast-slow circuit solutions, suitable for industrial and mobile hydraulic applications requiring precise flow regulation and operational reliability.



# Pressure Gauges

Hydraulic pressure gauges provide real-time pressure readings to ensure safe and efficient system operation. They help regulate pressure levels, preventing overloads and optimizing performance. Featuring durable construction, these gauges come in various sizes and pressure ranges, with analog or digital displays for accurate fluid pressure measurement in diverse industrial applications.

## FEATURES

1. **Accurate Pressure Monitoring** – Ensures precise system control and safety.
2. **Wide Range of Sizes** – Available in 40mm, 63mm, 100mm, 150mm, and 6-inch variants.
3. **High-Pressure Resistance** – Supports pressure ratings from 6 bar to 700 bar.
4. **Durable Construction** – Available in stainless steel (SS316) and mild steel (MS) materials.
5. **Versatile Applications** – Suitable for industrial machinery, hydraulic presses, fluid power systems, and mobile equipment.



We deal in **MASS** and **Wika** Gauges.

# Manifold Blocks

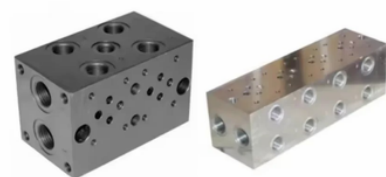
We supply standard and custom hydraulic manifold blocks designed for the installation and integration of directional control valves in hydraulic systems. These manifold blocks provide a compact and efficient solution for flow distribution, helping reduce external piping, minimize leakage points, and improve overall system reliability. Precision-machined to meet industry standards, the manifolds are suitable for both industrial and mobile hydraulic applications.

Types Available:

- Single Station Manifolds
- Multi-Station Manifolds (2–9 Stations)
- Manifolds with Pressure Relief Valve Cavity Options

Sizes:

- NG06, NG10, NG16, NG22



# Lubrication Pumps & Motorized Units

We offer a wide range of manual, pneumatic, and motorized lubrication pumps designed to ensure reliable and efficient lubrication across various industrial applications. These pumps support centralized and point lubrication systems, helping reduce wear, improve equipment life, and maintain smooth operation in demanding environments.

Product Range:

- **Rotary Pumps:** Flow rate from 1 to 40 LPM with a maximum operating pressure of 15 kg/cm<sup>2</sup>, suitable for continuous oil transfer applications.
- **Hand / Piston Pumps:** Available with reservoir capacities ranging from 250 ml to 1700 ml, ideal for manual and intermittent lubrication requirements.
- **Grease Pumps:** Offered in hand-operated and pneumatic versions for efficient grease dispensing in workshops and industrial setups.
- **Motorized Lubrication Pumps:** Available in single-phase and three-phase configurations, with tank capacities from 3 L to 40 L, suitable for centralized lubrication systems.



## Hydraulic Accessories

We supply a comprehensive range of hydraulic accessories designed to support efficient system operation and reliable performance across industrial and mobile applications. These accessories complement hydraulic systems by enabling accurate monitoring, manual operation, controlled motion, and power transmission.

Hydraulic Accessories Include:

- **Minimess hose couplings** for pressure measurement and system diagnostics
- **Dowty hand pumps** for manual operation, testing, and emergency use
- **Mobile control valves** for directional and flow control in mobile equipment
- **Hydraulic motors** for converting hydraulic energy into rotary motion



## Get In Touch!



(+91) 9673007757  
(+91) 8421880980  
(+91) 9673007756



sales@dlfluid.com  
contact@dlfluid.com



**Sales Office:** Plot no. BGP-124 BG Block, Indrayani corner, Telco Road, MIDC, Bhosari, Pune, Maharashtra 411026

**Factory:** Plot No.165/3/4, T Block, MIDC, Bhosari 411026



www.dlfluid.com

## Dealerships & Distributorships

Highlighting our partnerships with leading brands and manufacturers in the hydraulic industry.



www.dlfluid.com